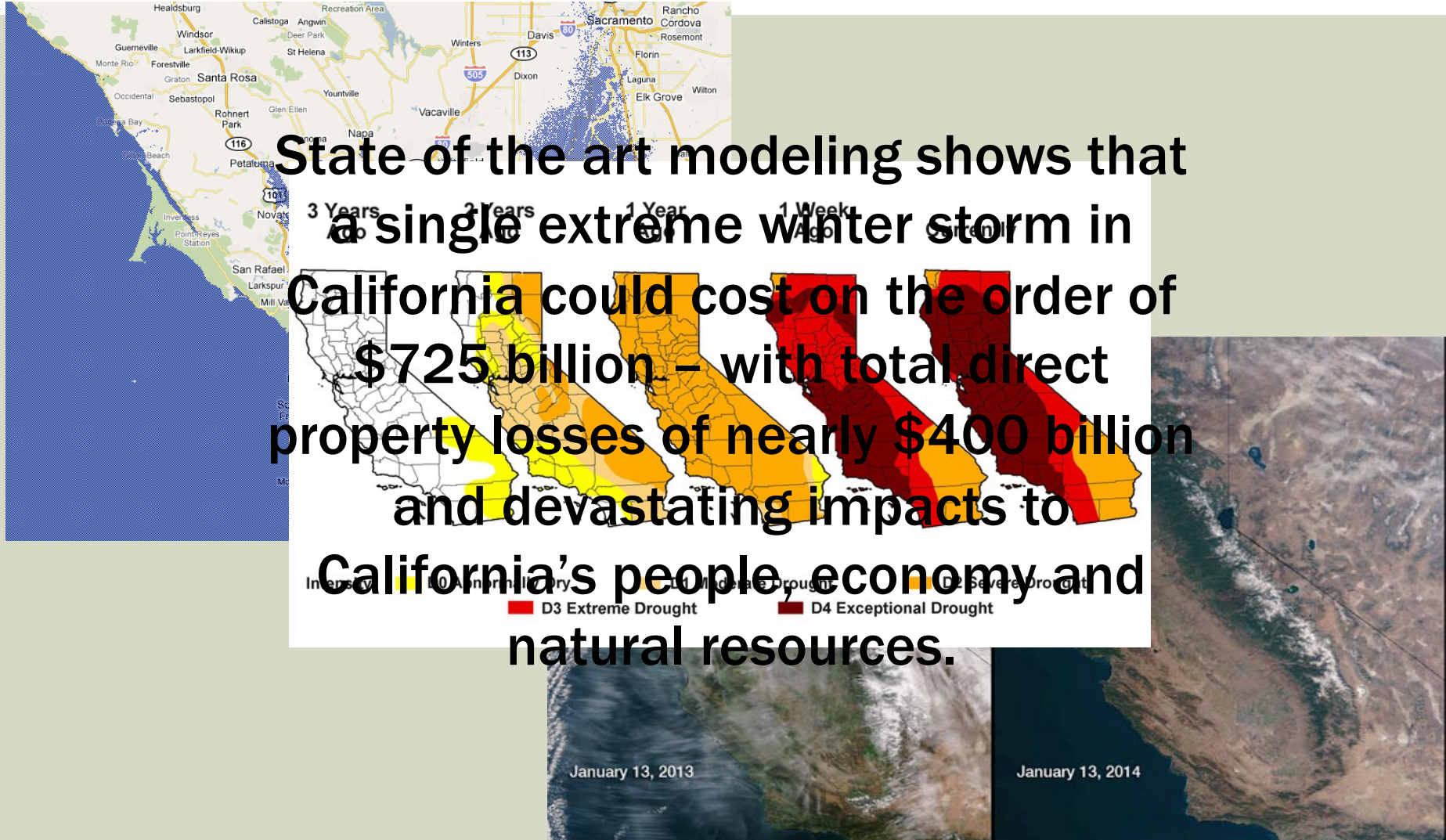


# Alliance of Regional Collaboratives For Climate Adaptation

Kif Scheuer  
Local  
Government  
Commission

# Climate Change in California

State of the art modeling shows that a single extreme winter storm in California could cost on the order of \$725 billion - with total direct property losses of nearly \$400 billion and devastating impacts to California's people, economy and natural resources.



# What is ARCCA

- A network of 5 regional adaptation collaboratives
- Brings members together to amplify voices, share information, and advance adaptation practices in California.
- Works collectively with state and federal agencies to improve dialogue and opportunities

**ARCCA** Alliance of Regional Collaboratives  
for Climate Adaptation

# Los Angeles Regional Collaborative



## ■ Goals

- Encourage greater local/regional coordination and cooperation
- Bring together community leadership
- Share Information and foster partnership
- Develop system-wide climate and sustainability strategies

## ■ Structure

- A collaborative organization housed at the UCLA Institute of the Environment, governed by the LARC Steering Committee, which is made up of LARC Members
- 27 member organizations
- Formed in 2009

## ■ Project example

- “A Greater L.A.: the Framework for Regional Climate Action and Sustainability”

# Capital Region Climate Readiness Collaborative



CAPITAL REGION  
CLIMATE READINESS  
COLLABORATIVE

## ■ Goals

- Create stronger, sustainable, and economically viable communities
- Promote greater climate change resilience planning coordination
- Create a forum for community leaders
- Share information, Identify vulnerabilities and gaps, leverage resources
- Advance comprehensive solutions

## ■ Structure

- An informal network of stakeholders from the 6-county Sacramento region, overseen by a steering committee. LGC serves as the fiscal agent
- 8 member organizations
- Formed in 2013

## ■ Project Example

- Business continuity planning for small/medium enterprises

# San Diego Regional Climate Collaborative



## ■ Goals

- Support regional efforts and advance comprehensive solutions
- Expand membership and effectiveness of the Collaborative.
- Communicate outcomes locally and more broadly
- Build capacity within regional public agencies

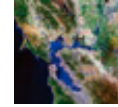
## ■ Structure

- A member-based network that supports San Diego-based public agencies. Governed by a Steering Committee, and the University of San Diego operates as its fiscal agent and administrative home
- 14 member organizations
- Formed in 2011

## ■ Project Example

- “San Diego, 2050 is Calling. How will we answer?”

# Bay Area Climate & Energy Resilience Project



BAY AREA CLIMATE & ENERGY  
RESILIENCE PROJECT

## ■ Goals

- Support and enhance the local climate adaptation efforts of cities, counties and other organizations.
- Pursue specific actions that will help stakeholders to move forward in a more efficient and powerful manner.

## ■ Structure

- An informal network of private, and non-profit stakeholders. Operated as a project of the Bay Area Joint Policy Committee
- Over 100 organizations are in the network. No formal membership
- Formed in 2011

## ■ Project Example

- 9-county needs assessment

# Sierra Climate Adaptation & Mitigation Partnership



**SIERRA  
CAMP**

## ■ Goals:

- Communicate the value of local environment & resources
- Convene government, business, academia & community groups
- Empower Sierra leaders to share best practices
- Identify critical needs & strategies
- Leverage efforts/resources & funding
- Build & strengthen connections within the region & downstream cities

## ■ Structure

- very likely a modified consensus decision-making model (consensus-minus-two)
- 10+ member organizations (currently forming)
- Formed in late 2014

## ■ Project Example

- participation in Climate Solutions University (CSU). As a participant in CSU's Model Forest Policy Program



# What does Collaboration Mean to ARCCA?

- **Our common voice will increase the credibility and effectiveness of our efforts to inform state and federal policy, guidance and resource allocation. Through Collaboration we can**
  - **Accomplish more than by working alone and better help the State succeed**
  - **Accelerate regional efforts through best practices sharing, pilots and coordination**
  - **Support regional differences while still finding common ground**
  - **Embrace other regions in the state**
  - **Increase regional funding opportunities**

# ARCCA Outcomes

- **Fostering Regional Development**
  - Sharing of best practices
  - Development of case studies and resources
  - Support for new California Collaboratives
  - Participation in a national dialogue on regional collaboration
  - Development of Regional Collaboration Toolkit
- **Coordination with State**
  - Safeguarding California Plan
  - State Climate Change Research Plan
  - Affordable Housing and Sustainable Communities Program
  - President's Taskforce on Climate Resilience and Preparedness



**Thank You!**

**Kif Scheuer**  
kscheuer@lgc.org  
415-717-4809